

APT Software Install Guide

for Windows 7[®]

Introduction



The booklet explain you a procedure of installing the APT software into your PC running on the Windows 7® as well as the basic precautions.

Read the APT Software Install Guide thoroughly before your installation and keep it readily available for reference.

If you have any question or thoughts you would like to share with us - we would like to hear from you.

Safety symbols

The software install guide uses the following headings to display important safety information and so on. Strict adherence to the instruction next to these heading is required at all times.

Symbol	Explanation
	Calls attention to general instruction. Failing to follow this could prevent you from the software installation and cause possibly damage to files and/or test programs.
	Calls attention to "One-point advice" which should be useful when you are at a loss to operate the products.

(NOTE)

- (1) Windows®, Windows 7®, DirectX® is a registered trademark of Microsoft Corporation in the United States and other countries.
- (2) Intel®, Core™ 2, Core™ 2 Duo is a registered trademark of Intel Corporation and its affiliate companies in the United States and other countries.
- (3) COGNEX® is a registered trademark of Cognex Corporation and OMI is their trademark.
- (4) The company name and the product name listed in the software install guide are the trademark of each company.
- (5) No portion of the contents of this publication may be reproduced or transmitted in any form or by any means without the express written permission of TAKAYA Corporation.
- (6) The design of the product is under constant review and whilst every effort is made to keep this software install guide up to date, the rights is reserved to change specifications and equipment at any time without prior notice.
- (7) We assume no responsibility whatsoever for any damages resulting from the use of our software.

Preparation

System requirements

The edition of the Windows 7[®] and the PC are supposed to meet the basic requirements mentioned below.

- The Windows 7[®] Professional edition (limited to 32Bit edition)
- The PC includes CPU processor with clock frequency of 1GHz or more.
(The CPU is limited to the Intel[®] Core[™] 2 or the Core[™] 2 Duo or earlier)
- The PC includes memory of 1GB or more.
- The PC includes a hard disk or SSD with free space of 16GB or more.
- The graphic processor to accommodate the DirectX[®]9 with a driver of the Windows[®] Display Driver Model (WDDM) 1.0 or more



Takaya does not warrant that the operation of the software will be interrupted or error free or that functions contained in the software will operate in the combinations you select for use, even if the system requirements above are filled. Therefore, the software installation and operation must be done on your own responsibility.

APT software versions corresponding to the Windows 7[®]

Listed below are the APT software versions corresponding to the Windows 7[®].

APT Series	Software versions for Windows7 [®]
APT-9600	Ver.1.1-8 or later
APT-820S	Ver.1.1-8 or later
APT-9411/9411SL	Ver.1.3-3 or later

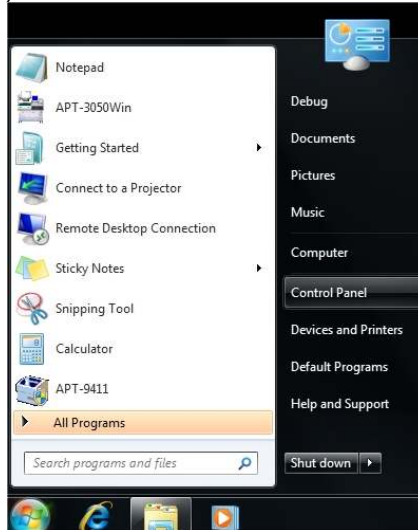
User Account Control (UAC) Settings

The APT system requires Administrator rights and you must change the User Account Control (UAC) settings according to the following procedure.

Setting Procedure



- (1) Put your mouse point over the Windows key and click the left button on your mouse.
- (2) It displays the Start menu (Fig. 1).



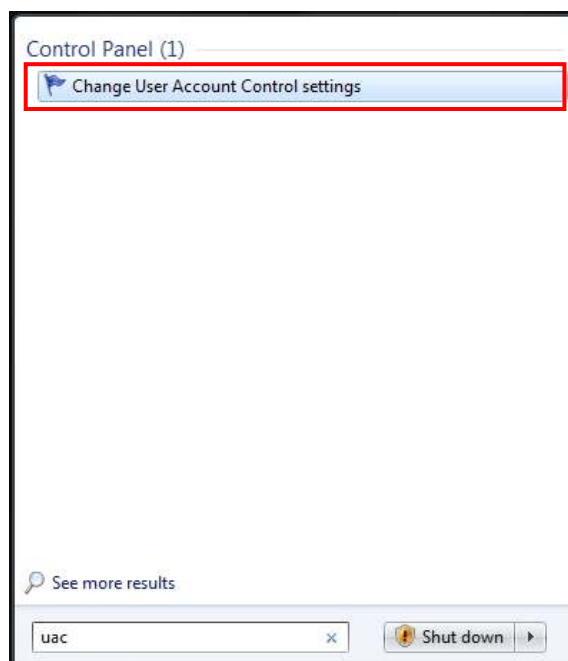
[Fig. 1]

- (3) Use your mouse to select the box on the bottom and enter “uac” on the keyboard.



[Fig. 2]

- (4) After Fig. 3 was displayed, put your mouse pointer over “Change User Account Control settings” and double click the left button on your mouse.



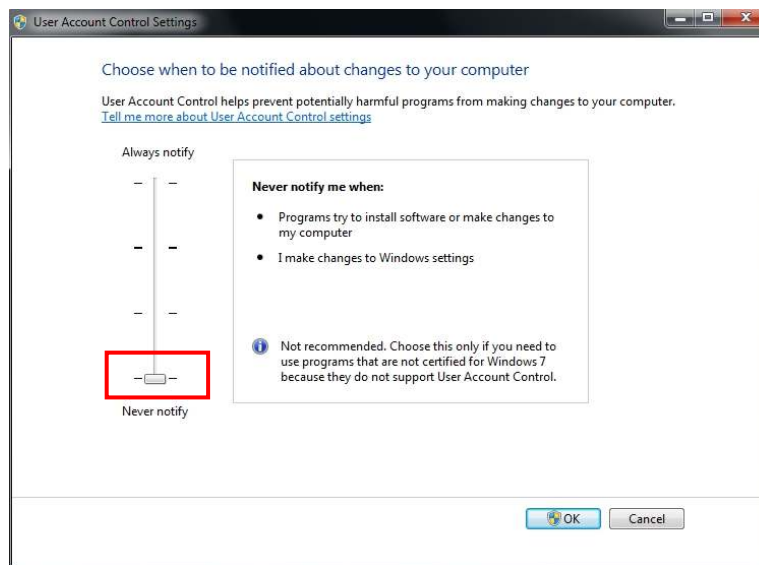
[Fig. 3]

(5) It displays the User Account Control screen (Fig. 4). Click on [Yes] button on the screen.



[Fig. 4]

(6) It displays the User Account Control Setting screen (Fig. 5). Move the lever down to "Never notify" and click on [OK] button on the screen.



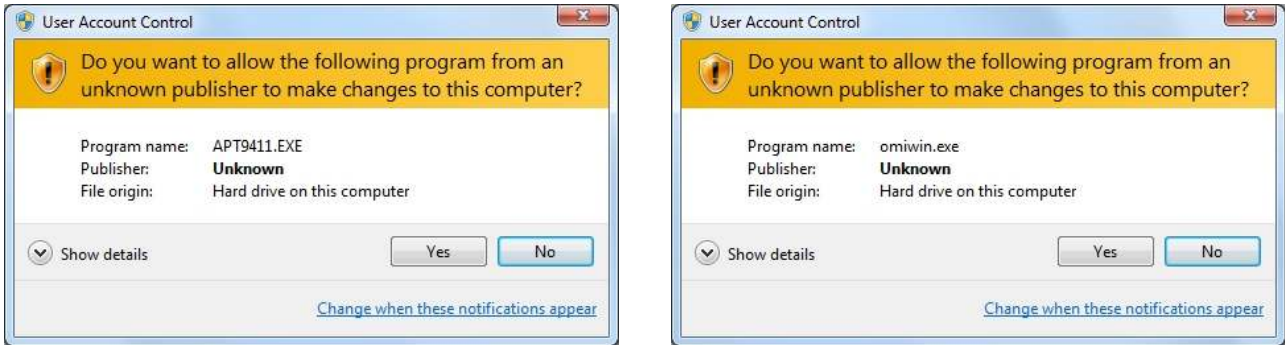
[Fig. 5]

(7) It displays the User Account Control screen (Fig. 4) again. Click on [Yes] button on the screen.

(8) The display goes back to the Windows desktop screen. Reboot the Windows system. After the Windows desktop screen appeared on the display, your User Account Control (UAC) settings are completed.

The reason why the User Account Control (UAC) settings are needed

If you install the APT software with the User Account Control Settings (Fig. 5) assigned to “Always notify”, the following screen (Fig. 6) will always disturb the APT software from starting. You can start the APT software by clicking on [Yes] button, but this affects your operations on the following cases. Therefore, make sure that you configure the User Account Control Settings as recommended in the previous page.



[Fig. 6]

Effects on the APT software

- Each time you starts the APT software, you get the User Account Control screen above (Fig.6). So you cannot start the APT software unless you click on [Yes] button.
- You are unable to click-hold on the file (i.e. test programs) and drag and drop it anywhere on the APT software.
- You are unable to run DDE communication.
- Other operations restricted by your User Account Control settings in the Windows®.

Control Panel Settings

Before beginning the APT software installation, move to Control Panel to configure “Power Options” and “Screen saver” properly.




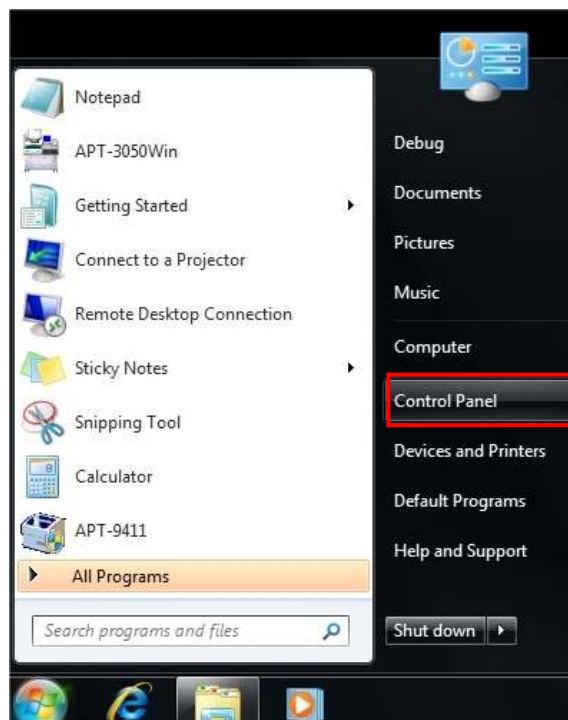
When Power Options is configured to enable Sleep mode and Screen saver, the APT software may not work as you had expected. Therefore, turn off those functions according to the following procedure.

Power Options

Go through the following steps to disable “Put the computer to sleep” in Power Options.



- (1) Put your mouse pointer over the Windows key  and click the left button on your mouse.
- (2) Use your mouse to select Control Panel from the Start menu.

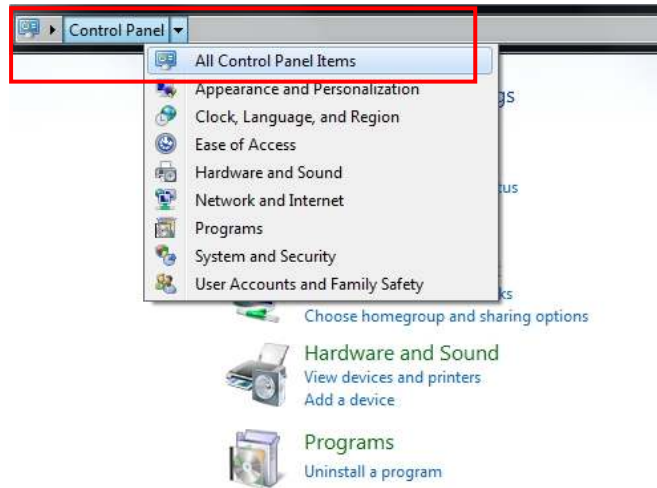


[Fig. 7]

- (3) Put your mouse pointer over [▼] which is right next to [Control Panel] which is located in the upper left portion of the screen (See Fig. 8) and click the left button on your mouse. Then select [All Control Panel Items] from pull-down menu. (See Fig. 9)

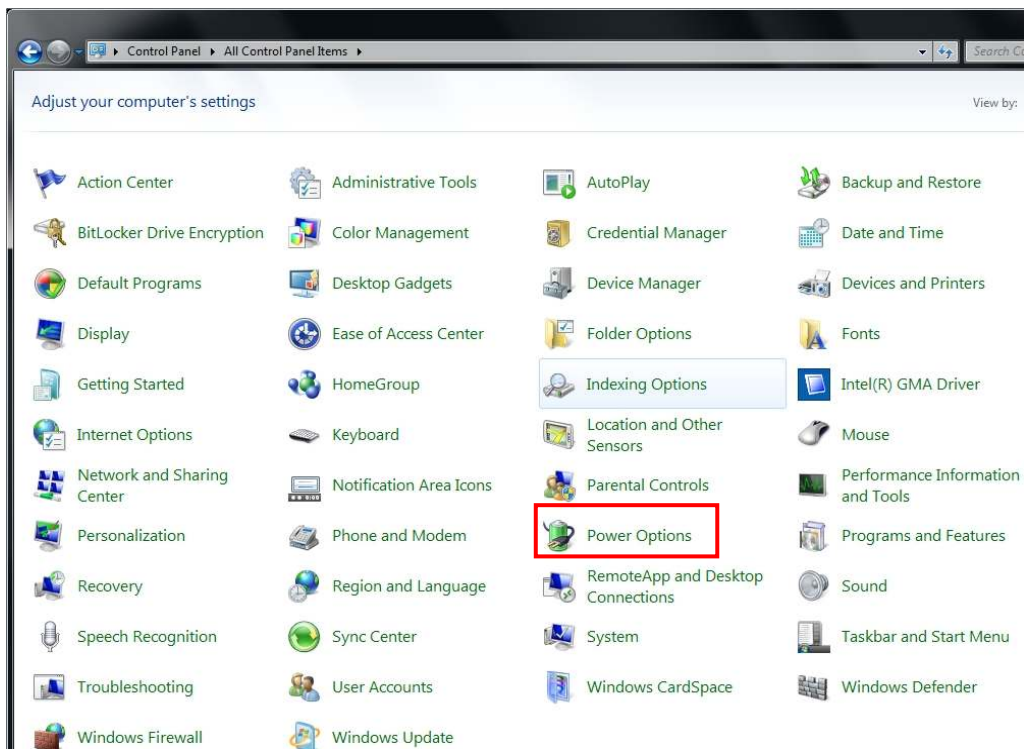


[Fig. 8]



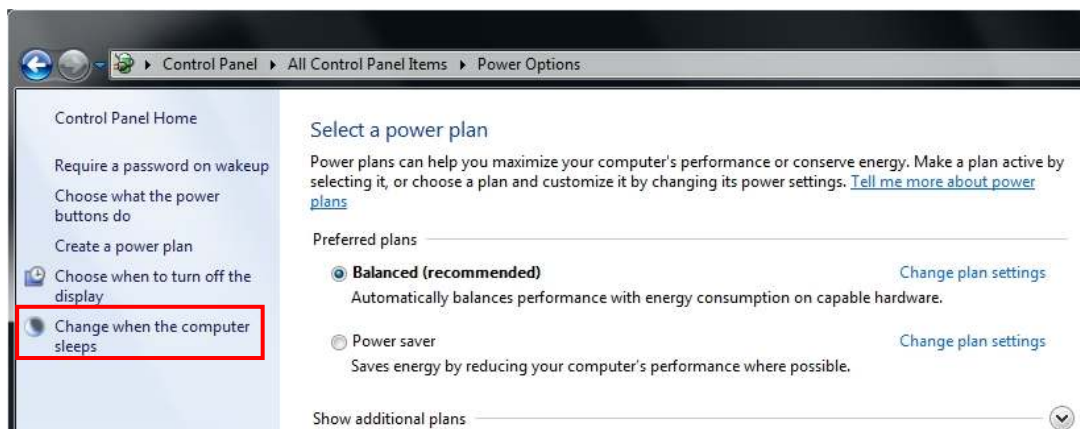
[Fig. 9]

- (4) It shows a list of Control Panel icons on the display. (See Fig. 10) Put your mouse pointer over [Power Options] and click the left button on your mouse.



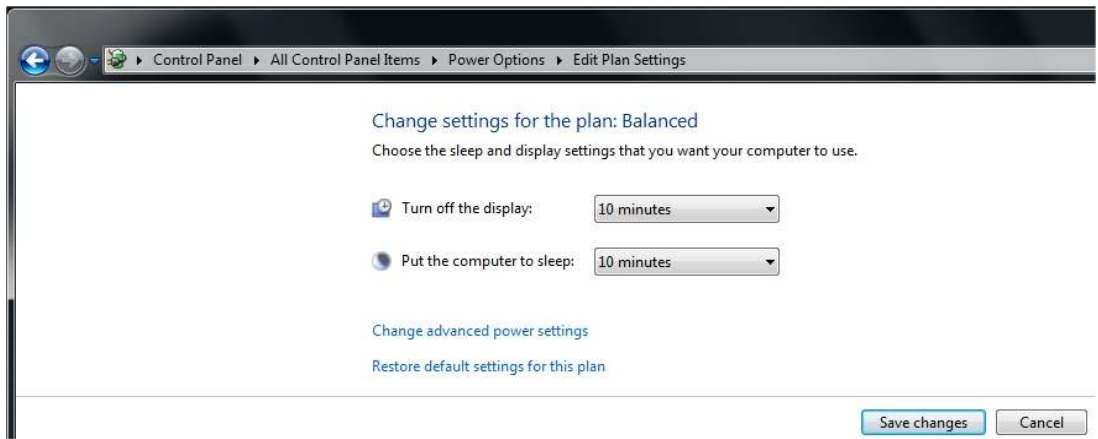
[Fig. 10]

- (5) It displays the Power Options screen on the display. (See Fig. 11) Put your mouse point over [Change when the computer sleeps] and click the left button on your mouse.



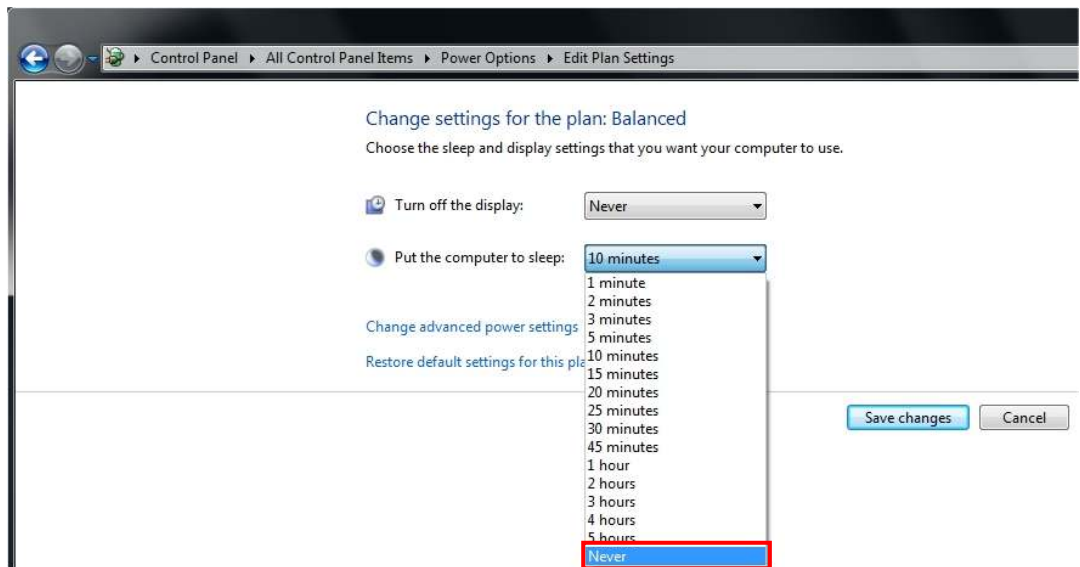
[Fig. 11] Power Options screen

(6) It displays the Change plan setting screen on the display. (See Fig. 12)



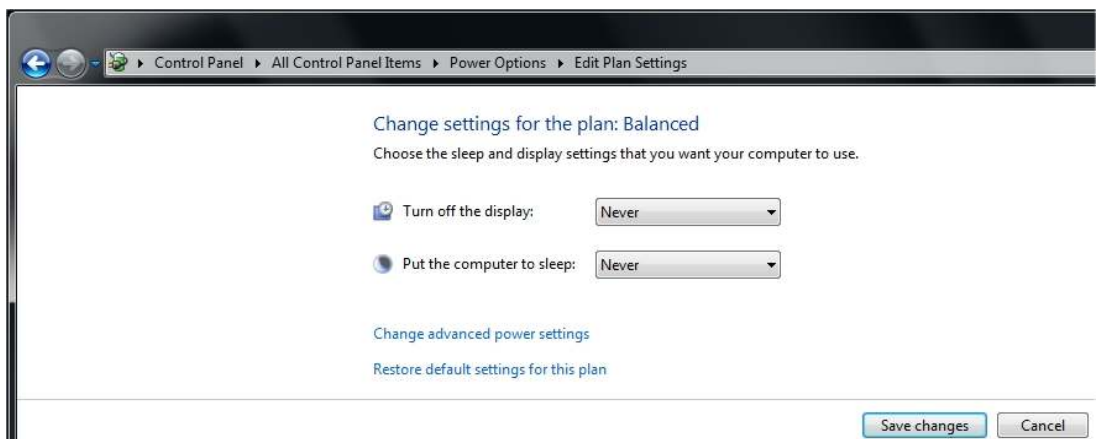
[Fig. 12] Change plan setting screen

(7) Put your mouse pointer over [Put the computer to sleep] and click the left button on your mouse to select [Never] from the pull-down menu. (See Fig. 13)




[Fig. 13]

(8) Put your mouse pointer over [Save Changes] and click the left button on your mouse to save your change. (See Fig. 14)



[Fig. 14]

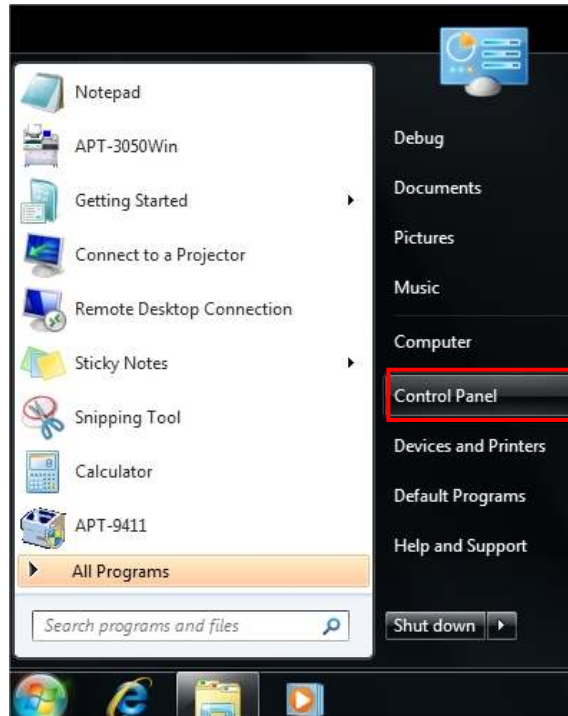
(9) The display goes back to the Power Options screen (Fig. 11).

(10) Click on[] button which is located in the upper right portion of the screen and click the left button on your mouse. After the Windows desktop screen appeared on the display, your Power Options settings are completed.

Screen Saver

If the Screen saver function is activated during the automatic operation on the APT-9411 In-line tester, the automatic operation is designed to be terminated automatically. Therefore, go through the following steps to disable Screen saver.

- (1) Put your mouse pointer over the Windows key  and click the left button on your mouse.
- (2) Use your mouse to select Control Panel from the Start menu.

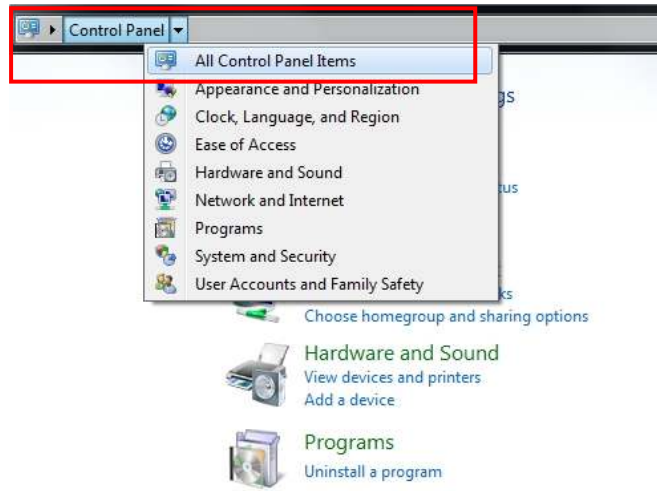


[Fig. 15]

- (3) Put your mouse pointer over [▼] which is right next to [Control Panel] which is located in the upper left portion of the screen (See Fig. 16) and click the left button on your mouse. Then select [All Control Panel Items] from pull-down menu. (See Fig. 17)
But when it displays Fig. 18, move directly to Process (4).

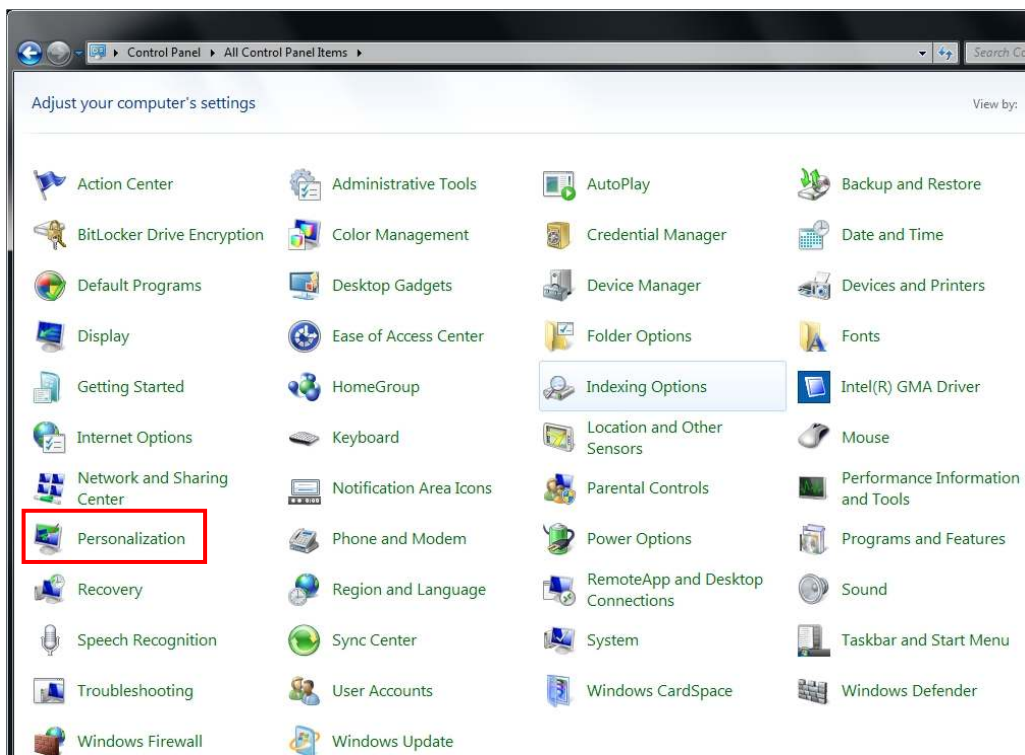


[Fig. 16]



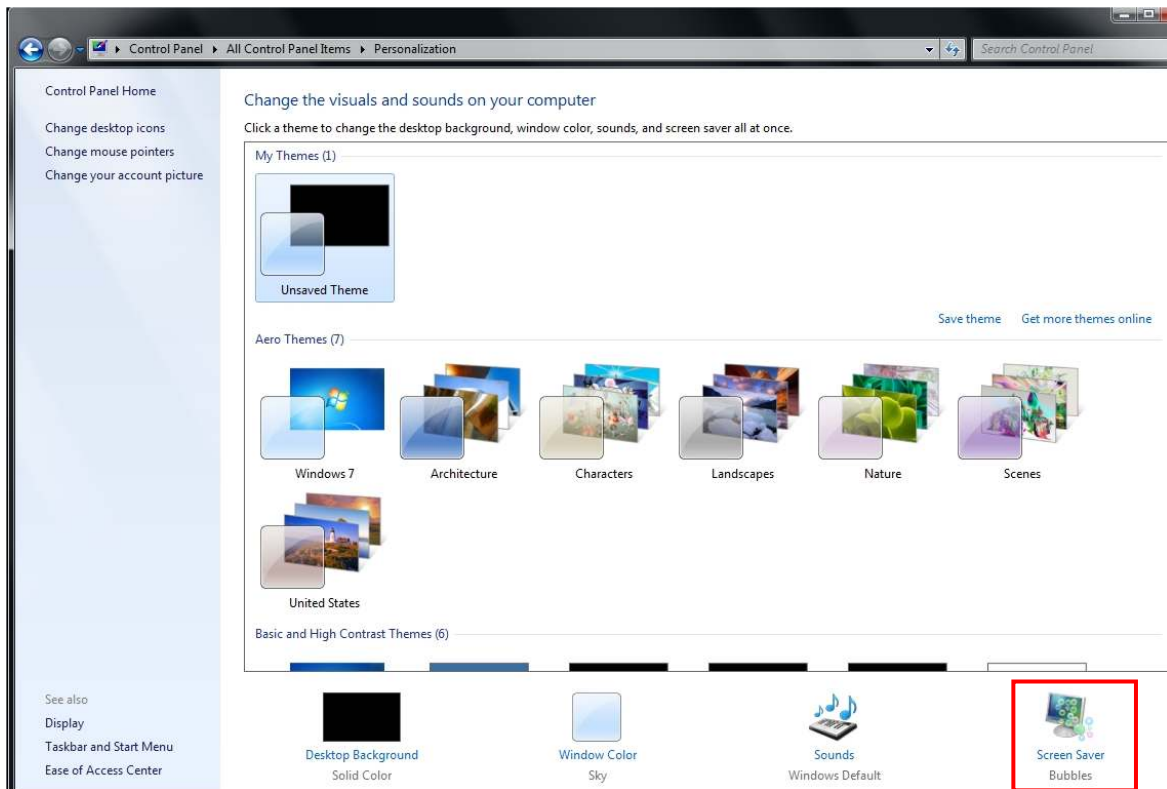
[Fig. 17]

- (4) It shows a list of Control Panel icons on the display. (See Fig. 18) Put your mouse pointer over [Personalization] and click the left button on your mouse.



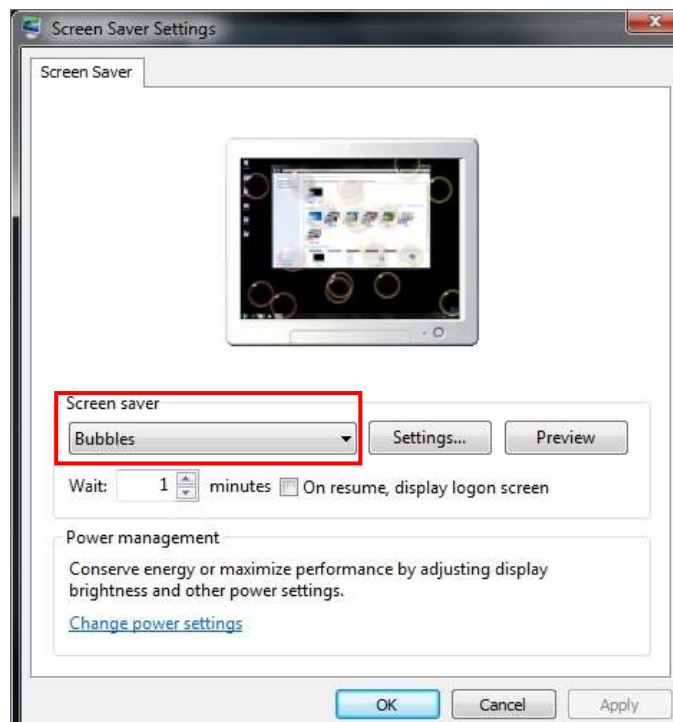
[Fig. 18]

- (5) It displays the Personalization screen on the display. (See Fig. 19) Put your mouse point over [Screen Saver] and click the left button on your mouse.



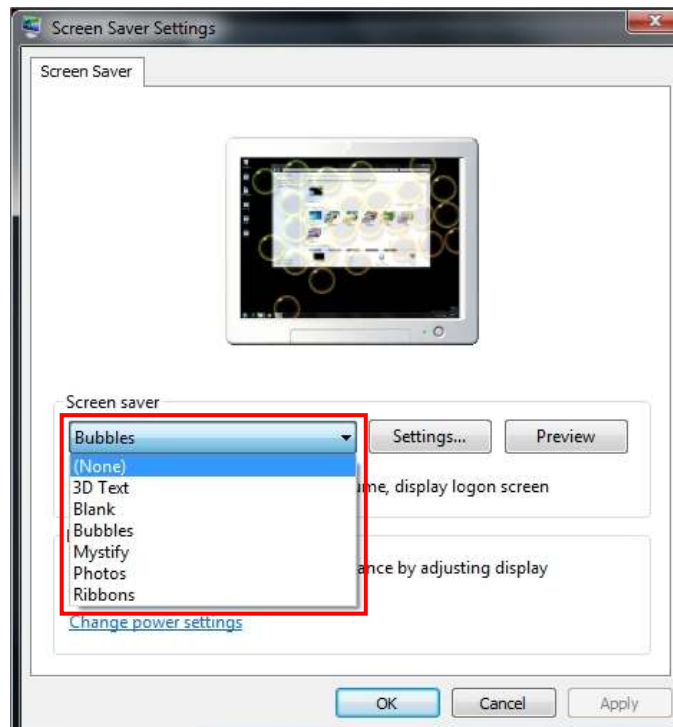
[Fig. 19]

- (6) It displays the Screen Saver screen on the display. (See Fig. 20) Put your mouse point over [▼] next to [Screen Saver] and click the left button on your mouse.



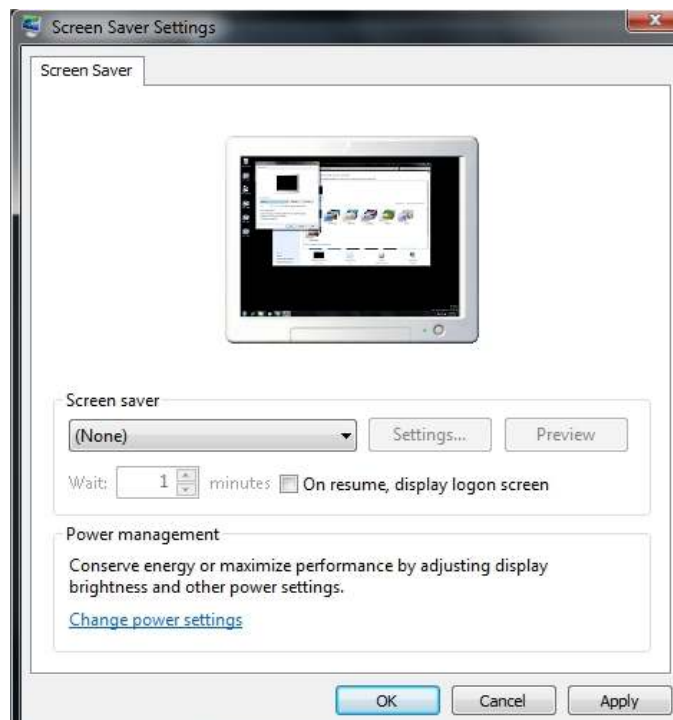
[Fig. 20]

- (7) Put your mouse point over [None] and click the left button on your mouse. Then put your mouse point over [OK] and click the left button on your mouse.



[Fig. 21]

- (8) It displays Fig. 22 below.




[Fig. 22]

- (9) Put your mouse point over [OK] and click the left button on your mouse, and the display goes back to Fig. 19.
- (10) Click on [X] button which is located in the upper right portion of the screen and click the left button on your mouse. After the Windows desktop screen appeared on the display, your Screen saver settings are completed.

PC setup with hardware installation of Interface cards etc

Put the interface cards and the Cognex (TOS-41 /4 / 5) card in PCI slots of your PC.

	<p>Make sure that you turned off your PC and unplug the APT system before those cards are fitted in or removed from the PCI slots. Failing to follow the instructions may cause damage to those cards.</p> <p>In addition, the timing of fitting those cards in the PCI slots should be after the User Account Control settings was completed but before the APT software is installed in your PC. If you fit those cards in the PCI slots after the APT software was installed, the APT system may not detect them in the PCI slots.</p>
---	---

Software Installation

New installation in a PC for the machines

In case of the first-time installation of the APT software into the PC which is now or will be loaded on the tester, the general procedure for the installation is described below.

- (1) Make sure any other application isn't running on the APT system.
Note: If the other application is running, there is fear the APT software isn't installed correctly.
- (2) Putting the APT software CD in the PC pops up the Auto Play screen. (See Fig. 23)
Put your mouse pointer over [Run setup.exe] and double click on it.



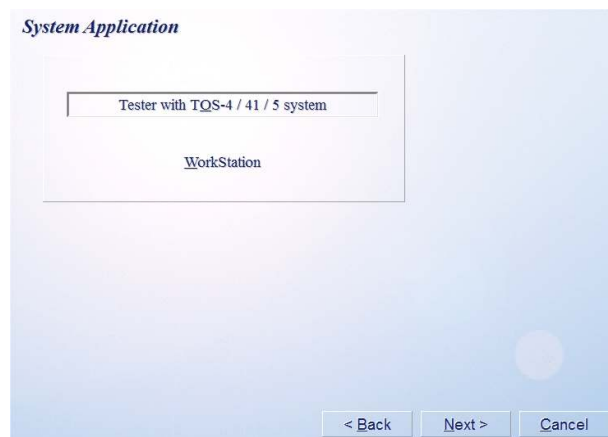
[Fig. 23]

- (3) The Installer starts to show you the Begin to Install screen. (See Fig. 24)
Use your mouse to select [Whole APT-9411 Install] and click on [Next>] button.



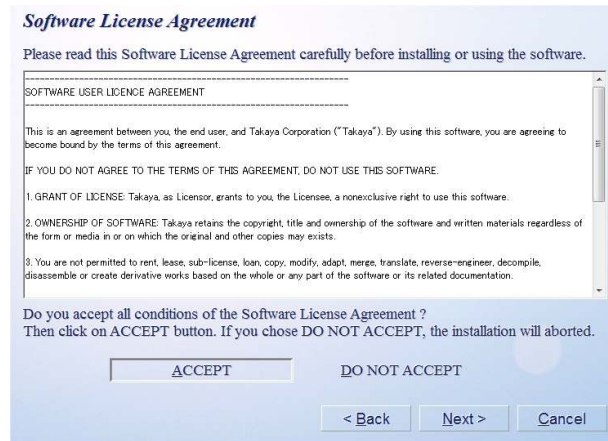
[Fig. 24] Begin to Install screen

- (4) On Fig. 25, use your mouse to select [Tester with TOS-4/41/5 system] and click on [Next>] button.



[Fig. 25] System Application screen

- (5) Read through the contents shown on the Software License Agreement screen (Fig. 26) and use your mouse to select [ACCEPT] and click on [Next>] button.



Software License Agreement

Please read this Software License Agreement carefully before installing or using the software.

SOFTWARE USER LICENCE AGREEMENT

This is an agreement between you, the end user, and Takaya Corporation ("Takaya"). By using this software, you are agreeing to become bound by the terms of this agreement.

IF YOU DO NOT AGREE TO THE TERMS OF THIS AGREEMENT, DO NOT USE THIS SOFTWARE.

1. GRANT OF LICENSE: Takaya, as Licensor, grants to you, the Licensee, a nonexclusive right to use this software.

2. OWNERSHIP OF SOFTWARE: Takaya retains the copyright, title and ownership of the software and written materials regardless of the form or media in or on which the original and other copies may exist.

3. You are not permitted to rent, lease, sub-license, loan, copy, modify, adapt, merge, translate, reverse-engineer, decompile, disassemble or create derivative works based on the whole or any part of the software or its related documentation.

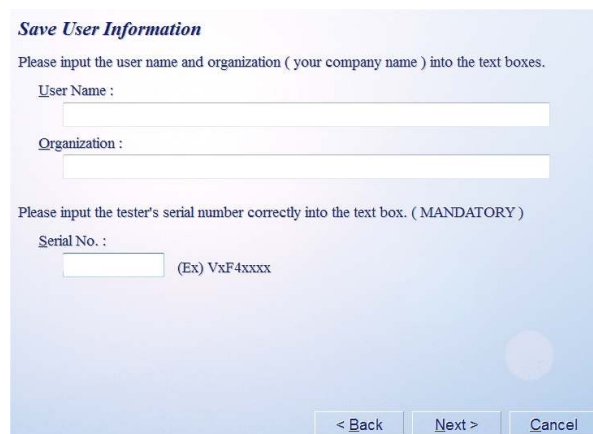
Do you accept all conditions of the Software License Agreement ?
Then click on ACCEPT button. If you chose DO NOT ACCEPT, the installation will aborted.

[Fig. 26] Software License Agreement screen



Unless you agree to the Software License Agreement, you will be allowed to neither install nor use the APT software.

- (6) On Fig. 27, use your keyboard to enter information in [User Name], [Organization] and [Serial No.] and click on [Next>] button.



Save User Information

Please input the user name and organization (your company name) into the text boxes.

User Name :

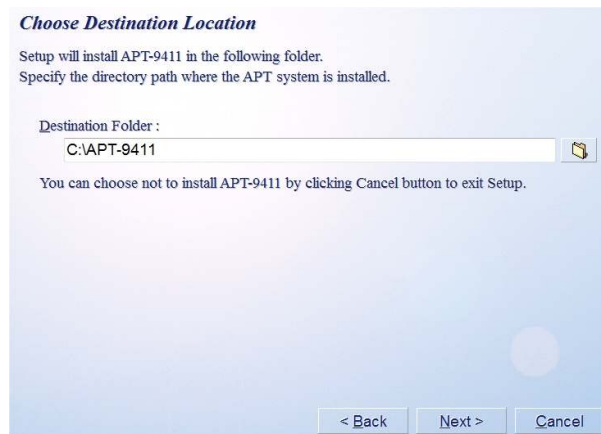
Organization :

Please input the tester's serial number correctly into the text box. (MANDATORY)

Serial No. :
 (Ex) VxF4xxxx


[Fig. 27] Save User Information screen

- (7) On Fig. 28, confirm the installation destination is correct and click on [Next>] button.



Choose Destination Location

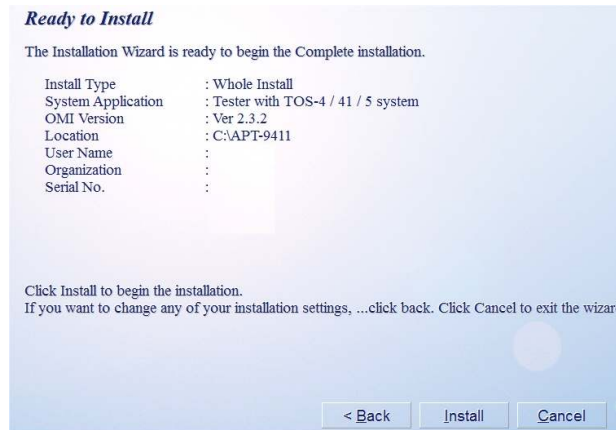
Setup will install APT-9411 in the following folder.
Specify the directory path where the APT system is installed.

Destination Folder :
 

You can choose not to install APT-9411 by clicking Cancel button to exit Setup.

[Fig. 28] Save User Information screen

- (8) On Fig. 29, confirm the contents of the display and click on [Install] button if you want to start the software installation. If there is something you need to modify, click on [Back] button.




[Fig. 29]

- (9) The software installation starts automatically and the verification screen for your driver installation pops up on the display. (See Fig. 30) Make sure that you select [Install this driver software anyway].



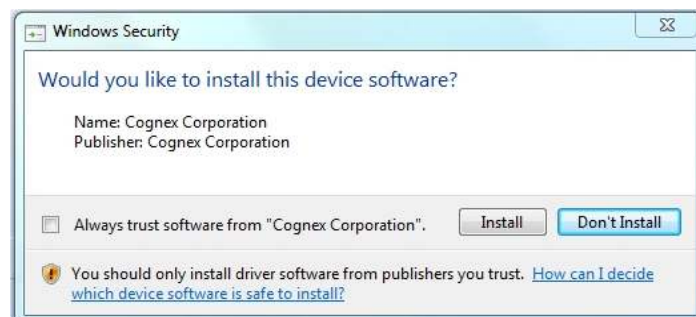
[Fig. 30] Verification screen



You may receive this verification screen time and time again during the software installation, but be sure to select [Install this driver software anyway] each time it is displayed.

In addition, the verification screen is for the interface cards (TAKAYA I/O card and Servo pack) fitted in the PCI slots.

- (10) It displays the TOS-4/41/5 driver installation screen. (See Fig. 31)
Use your mouse to select the box [Always trust software from "Cognex Corporation"] and click on [Install] button.



[Fig. 31]



Fig. 31 may appear more than once during the Apt software installation. Make sure that you select [Install] each time it is displayed.

- (11) After the installation was completed, Fig. 32 appears on the screen. Use your mouse to select [Finish] button.



[Fig. 32] Click Finish button to exit the Installation Wizard

- (12) It displays Fig. 33 asking if you want to reboot the PC. After rebooted the PC by clicking [Yes] button, use your mouse to double click the APT system icon which is displayed on the desktop or the Start menu, so that the APT software will start to operable automatically.



[Fig. 33]

New installation in a Workstation

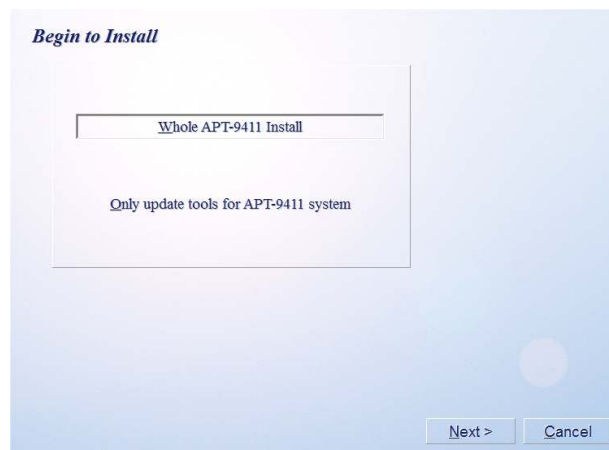
In case of the first-time installation of the APT software into a workstation, the general procedure for the installation is described below.

- (1) Make sure any other application isn't running on the APT system.
Note: If the other application is running, there is fear the APT software isn't installed correctly.
- (2) Putting the APT software CD in the PC pops up the Auto Play screen. (See Fig. 34)
Put your mouse pointer over [Run setup.exe] and double click on it.



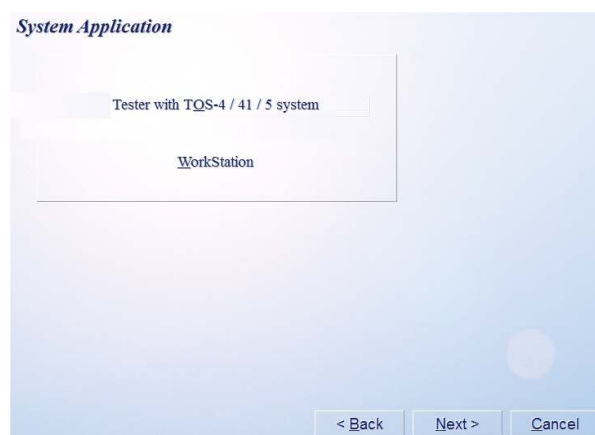
[Fig. 34]

- (3) The Installer starts to show you the Begin to Install screen. (See Fig. 35)
Use your mouse to select [Whole APT-9411 Install] and click on [Next>] button.



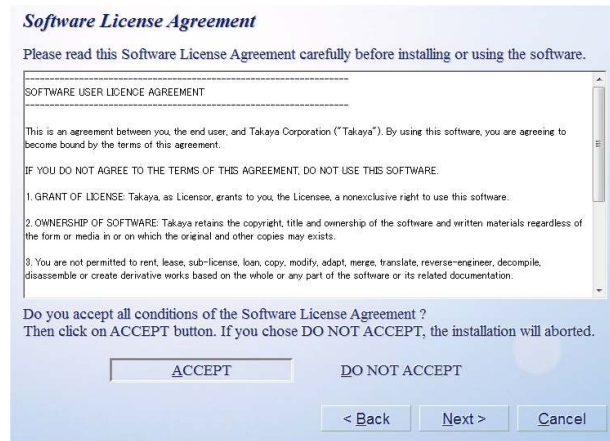
[Fig. 35]

- (4) On Fig. 35, use your mouse to select [WorkStation] and click on [Next>] button.



[Fig. 36]

- (5) Read through the contents shown on the Software License Agreement screen (Fig. 37) and use your mouse to select [ACCEPT] and click on [Next>] button.



[Fig. 37]



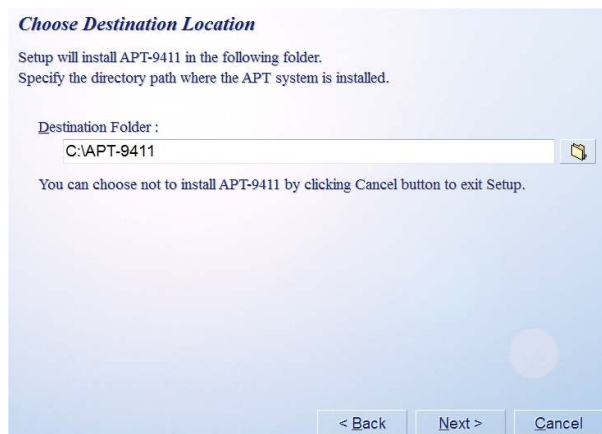
Unless you agree to the Software License Agreement, you will be allowed to neither install nor use the APT software.

- (6) On Fig. 38, use your keyboard to enter information in [User Name] and [Organization] and click on [Next>] button.



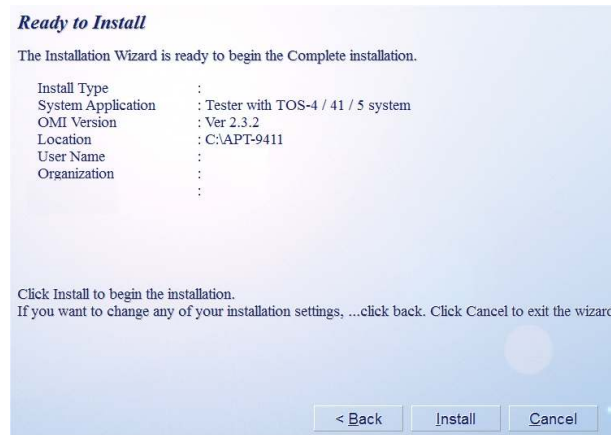
[Fig. 38]

- (7) On Fig. 39, confirm the installation destination is correct and click on [Next>] button.



[Fig. 39]

- (8) On Fig. 40, confirm the contents of the display and click on [Install] button if you want to start the software installation. If there is something you need to modify, click on [Back] button.



[Fig. 40]

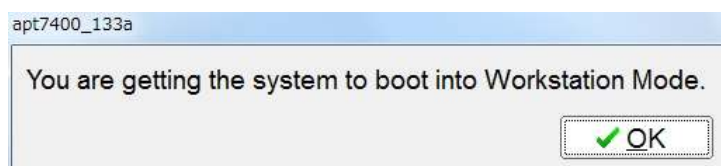
- (9) After the installation was completed, Fig. 41 appears on the screen. Use your mouse to select [Finish] button.



[Fig. 41]

- (10) Use your mouse to double click the APT system icon which is displayed on the desktop or the Start menu, so that the APT software will start to operable automatically.

	<p>At the time of your first startup after the APT software installation was completed, it displays Fig. 42 below. Use your mouse to click [OK] button, and the APT software starts in Workstation mode.</p>
--	--



[Fig. 42]

APT software update

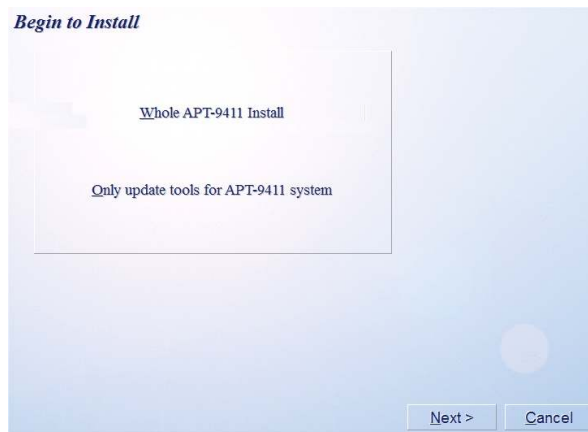
In case of updating the APT software in the PC with the latest versions, the general procedure for the installation is described below.

- (1) Putting the APT software CD in the PC pops up the Auto Play screen. (See Fig. 43)
Put your mouse pointer over [Run setup.exe] and double click on it.



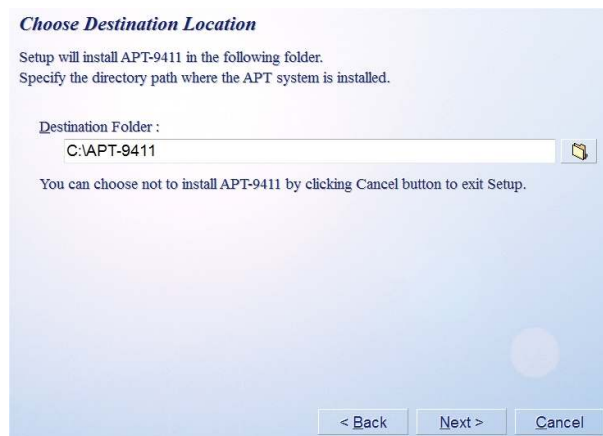
[Fig. 43]

- (2) The Installer starts to show you the Begin to Install screen. (See Fig. 44)
Use your mouse to select [Only update tools for APT-9411 system] and click on [Next>] button.



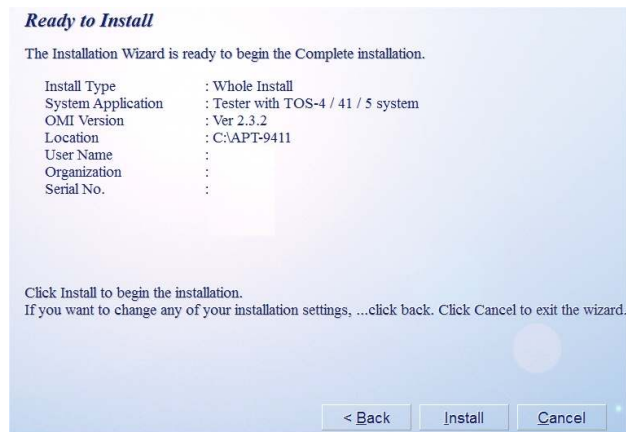
[Fig. 44]

- (3) On Fig. 45, confirm the installation destination is correct and click on [Next>] button.



[Fig. 45]

- (4) On Fig. 46, confirm the contents of the display and click on [Install] button if you want to start the software installation. If there is something you need to modify, click on [Back] button.



[Fig. 46]

- (5) After the installation was completed, Fig. 47 appears on the screen. Use your mouse to select [Finish] button, and all operations to update the APT software is completed.



[Fig. 47]



The procedure for updating the APT software with the latest versions is the same, regardless of whether it is the PC for the machines or the Workstation.

In addition, The configurations in Master mode and Option mode remain unchanged (the original settings are continued even if the software was updated. So you don't need to configure them again.

Table of contents

Introduction	1
Safety symbols	1
Preparation	2
System requirements	2
APT software versions corresponding to the Windows 7®	2
User Account Control (UAC) Settings	3
Setting Procedure	3
The reason why the User Account Control (UAC) settings are needed	5
Control Panel Settings	2
Power Options	2
Screen Saver	5
PC setup with hardware installation of Interface cards etc	9
Software Installation	10
New installation in a PC for the machines	10
New installation in a Workstation	14
APT software update	17

APT System Software Install Guide for Windows 7®

TAKAYA Corporation

Issued on: January, 2011
Made in Japan